

FACTORS C



CONTRIBUTING TO
Results of a Survey

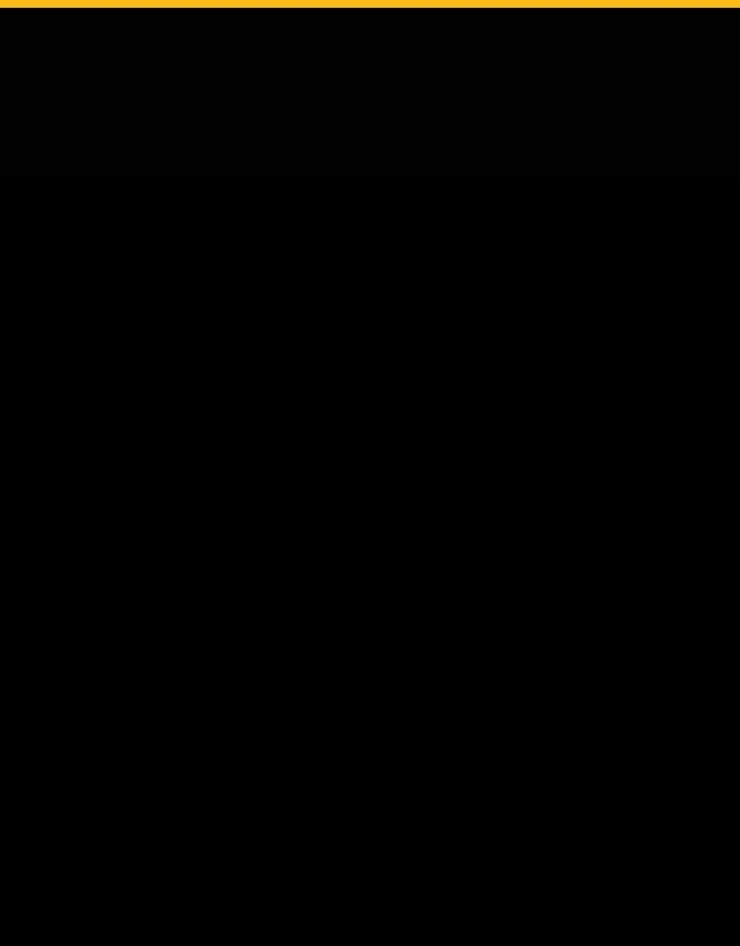
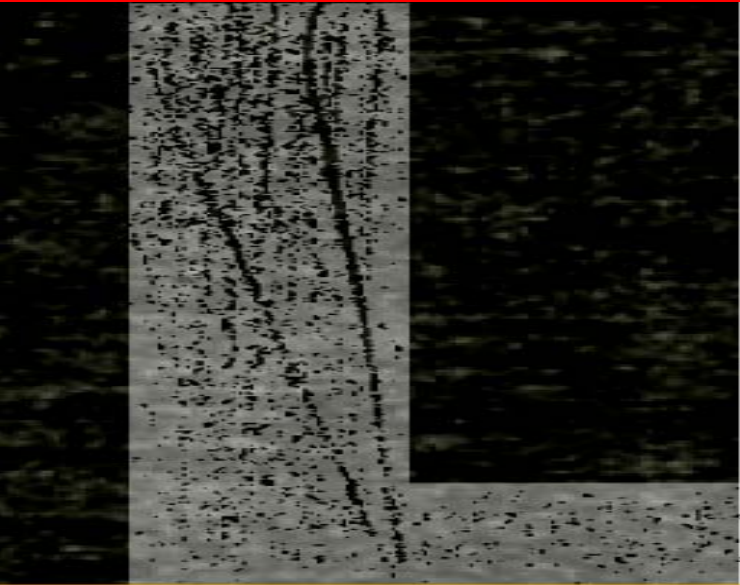


**GO PRO BONO BY
Way of 420 New Law**



NEW LAWYERS

Lawyers





taking a clinic



having a good
understanding of th

growing in my c
contribute to my



capacity to
community

disc
so



Discussing broad
social issues

reflect
my rea

participating in a
incentive-based
pro bono program

ing on
ctions

n

m

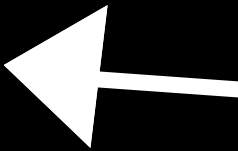
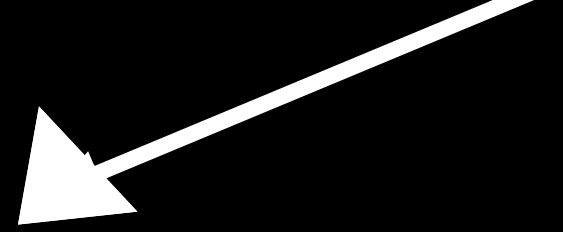
understanding of the
needs of my community

seeing myself as
similar to pro bono
clients

ne
nity

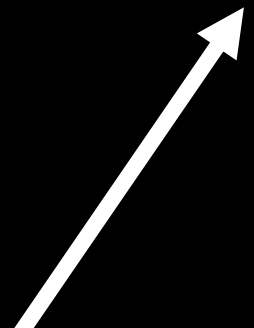
PRO
PARTIC
IN PR

BONO
CIPATION
ACTICE



performing pro bono

act on my





seeing social
individual

causes of
poverty

etal, versus
al,

solutions to
social issues



community
values

pers



WILLIAM MITCHELL
COLLEGE OF LAW

www.wmitchell.edu

spective

LL









@wmitchell.edu